

# Toiitech®



self cleaning toilets

**TWATER series**





**TWAT** is a **self-cleaning toilet for INDOOR** installation, **designed to fully replace traditional toilets**, avoiding the construction of tiled walls, floor, door, plants, etc. TWAT was thought and built to combine **design and technology**, ensuring **security for the user and a perfect sanitizing and drying at every use**.

**Our washing and disinfection SMART® TECHNOLOGY** ensures a high level of cleaning and disinfection of the toilet. Our exclusive technology wash and dry the wc-bowl thank to a retractable arm and wash also the walls around up to a height of 80 cm. Floor is washed by a system of nozzles that spray high pressure water and disinfectant on his surface, with a total consumption of water for each washing cycle of 20 lt.

This toilets are suitable for installation in **parking, subway station** etc. Maintenance is extremely simple and all our toilets are designed to ensure high efficiency and performance for all the time of commissioning.

#### **Features:**

- Internal dimensions of the toilets will change according to the type of site and desing (disabled / non-disabled / etc)
- **Washing and disinfection SMART® TECHNOLOGY:** washing, disinfection and drying of the wc-bowl, disinfection and drying of the walls around until an high of 80 cm, washing and disinfection of the floor
- External security access to technical room (if requested, access could be from inside).
- Interior HPL walls, **without spacing, outsidefixing, fireproof, anti-vandal, anti-graffiti**
- **Entrance swinging door** (is possible to install also stainless steel sliding door)
- **Detector of presence of person with radar**
- **Stainless steel handbasin with patented system antisyringe**
- SOS buttons
- **Access control** with button for free or coin-machine, or badges with possibility of setting access hours
- **Accessibility for users with disabilities in accordance with european requirements**
- **Self-diagnosis system** in the event of a fault and remote signaling in real time to GSM mobile or computer

self cleaning toilets

**TWATER series**



# PTMatic for environment



## DISINFECTION SYSTEM DCN-ECO3®:

At night, the toilet is completely disinfected without release of pollutants into the environment.

## LOW WATER CONSUMPTION:

Our washing system uses 35% less water than conventional systems, with a consumption of 20 liters per cycle. Without person inside, water system is completely closed, with no risk of loss or waste of water.

## LOW ENVIRONMENTAL IMPACT:

90% of components of the toilet are completely recyclable (cement, aluminum, plastic, etc). In our factory is possible to dispose old toilets.

## LOW CONSUMPTION LIGHTING SYSTEM WITH LED:

External and internal illumination of the toilet is with LED lamps (12 V). Total electricity consumption is 15 W per washing cycle. Without person inside, lights remain off, without wasting energy.

## REMOTE CONTROL:

Our toilets can be equipped with a remote control system that checks the status of the toilet. This allows to reduce number of site visits, optimizing the operations of the maintainer with a fuel saving of about 10%.



TOILITECH  
works  
with ISO 14000

self cleaning toilets

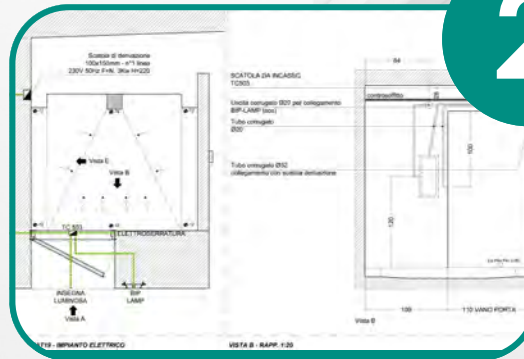
TWATER series

# HOW TO INSTALL?



1

**COSTUMER PROVIDES EXECUTIVE DRAWINGS OF THE ROOM WHERE THE TOILET WILL BE INSTALLED**



2

**PTMATIC PROVIDES DRAWINGS OF FOUNDATIONS TO THE COSTUMER**



3

**COSTUMER REALIZES THE FOUNDATIONS WITH ALL PLANTS (SEWAGE/HYDRIC/ELECTRIC)**



4

**THE TOILET IS ASSEMBLED AND TESTED IN PTMATIC FACTORY. AFTER FINAL TEST, TOILET IS DISASSEMBLED AND PREPARED FOR DELIVERY**



5

**THE TOILET IS BROUGHT TO THE INSTALLATION SITE, WHERE WILL BE REASSEMBLED AND CONNECTED BY OUR ENGINEERS**



6

**TOILET IS READY FOR USE**

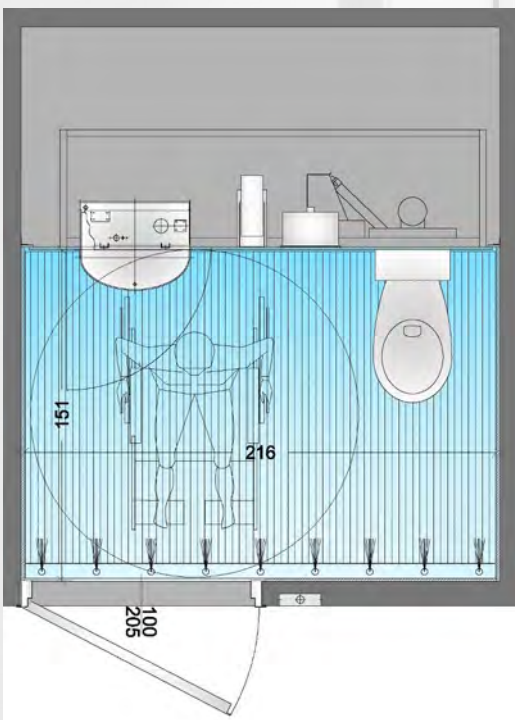
self cleaning toilets

**TWATER series**



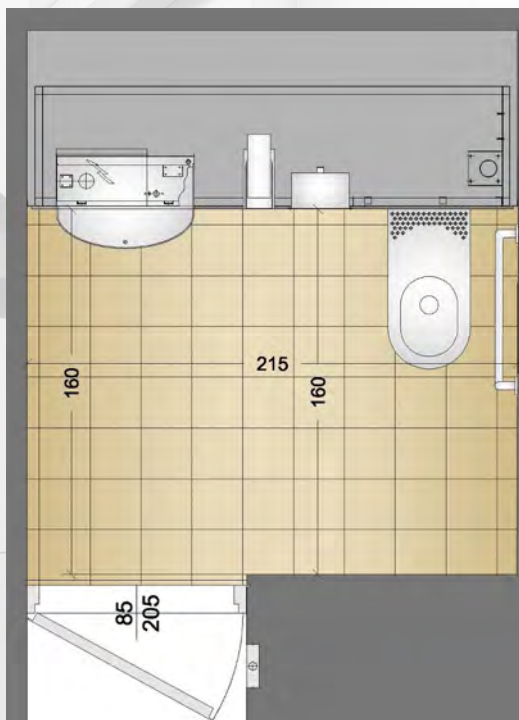


## TWAT H - 1 disable toilet



- Internal HPL wall panels
- Aluminum floor, non-slip, non-foot print, antibacterial, durable, no maintenance
- Swinging entrance door
- Access to technical room from outside

## TWAT H - 1 disable toilet



- Hpl wall for side with wc-bowl and washbasin
- Sides wall with tiles
- Stainless steel wall-hung wc bowl
- Floor with non-slip tiles
- Swinging entrance door
- Access to technical room from inside

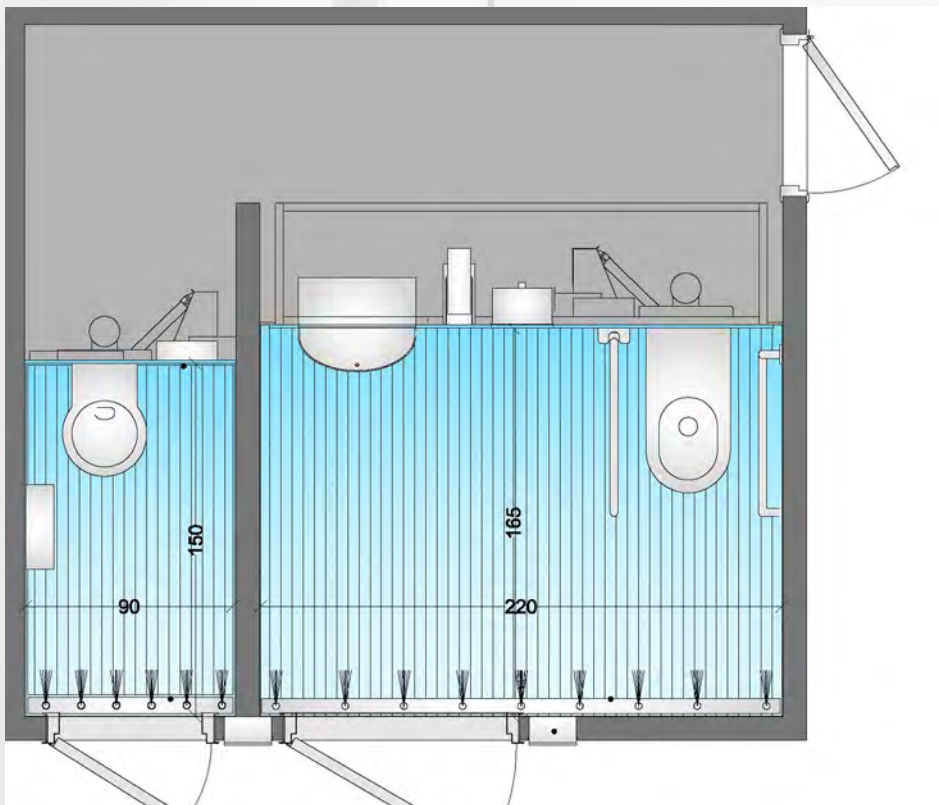
toilet dimensions change according to local regulations for disabled users

self cleaning toilets

TWATER series

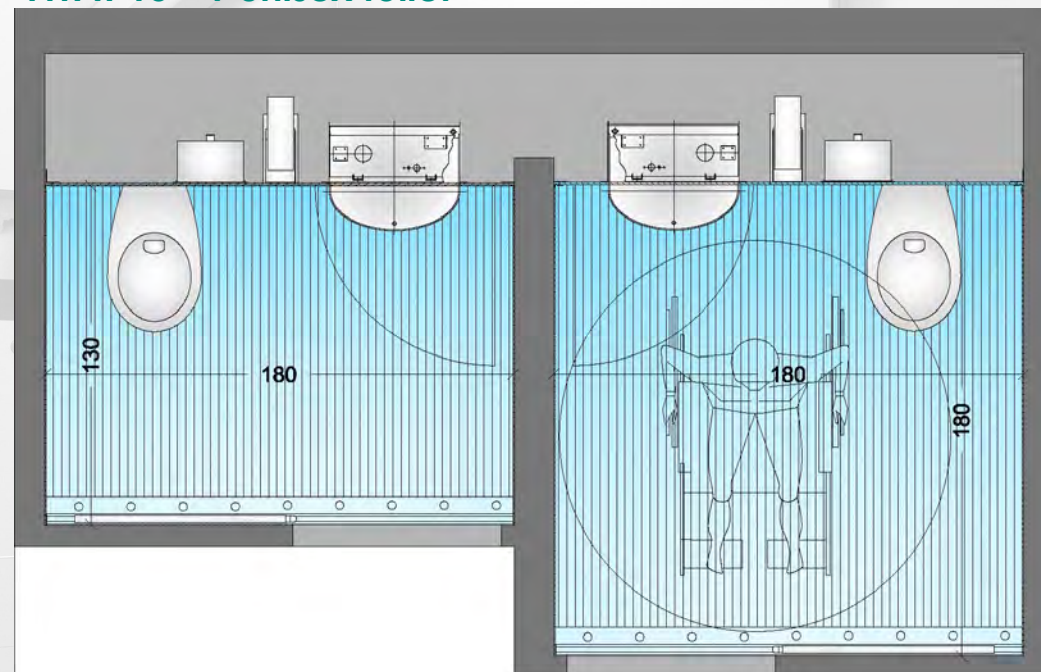


TWAT H - 1 disable toilet  
TWAT 10 - 1 unisex toilet



- Internal HPL wall panels
- Aluminum floor, non-slip, non-foot print, antibacterial, durable, no maintenance
- Swinging entrance door
- Access to technical room from outside

TWAT H - 1 disable toilet  
TWAT 15 - 1 unisex toilet



- Internal HPL wall panels
- Aluminum floor, non-slip, non-foot print, antibacterial, durable, no maintenance
- Stainless steel sliding entrance door
- Access to technical room from outside

self cleaning toilets

TWATER series



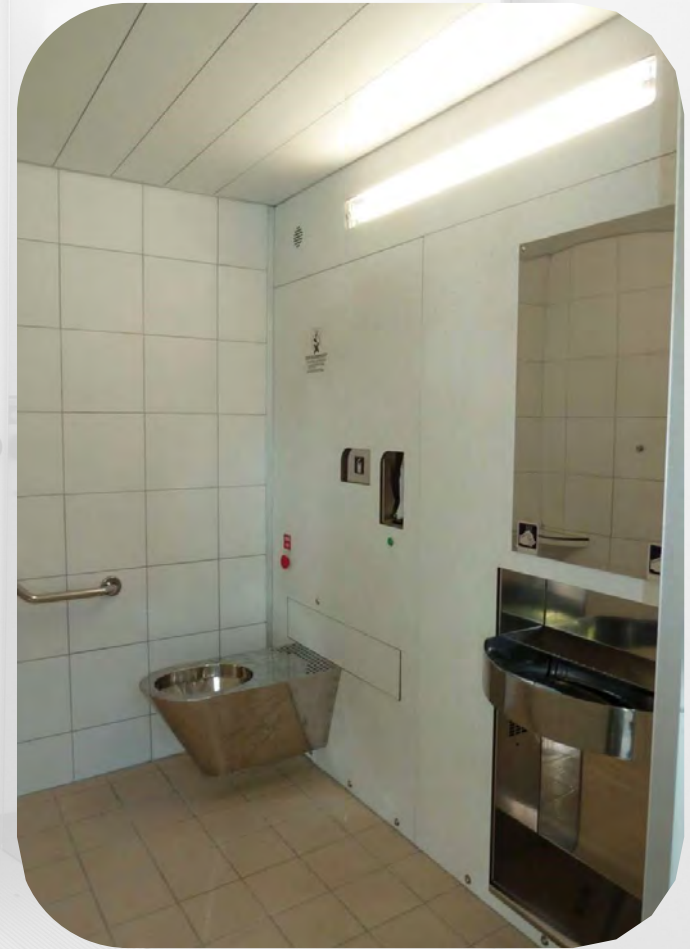
# PROJECTS

self cleaning toilets

**TWATER series**







self cleaning toilets

TWATER series





self cleaning toilets

**TWATER series**





self cleaning toilets

**TWATER series**

Oss (NL)

TWATER 10



self cleaning toilets

**TWATER series**



# Sassuolo

# TWATER A



self cleaning toilets

**TWATER series**



# Turbigo

# TWATER H



self cleaning toilets

**TWATER series**

# INTERIORS

## Disable handrail

- stainless steel inox on request

## Toilet paper dispenser

- fireproof
- antivanda
- automatic with control of uses (on request)

## Ceramic wall-hung bowl:

- stainless steel available
- non-spill system (on request)

## Security stainless steel mirror

## In-built stainless steel waste basket with closure door:

- antivandal
- fireproof

## Low consumption lighting with LED

## In-built stainless steel hand basin:

- no-touch dispenser for soap/water/air
- anti-syringe security system
- Fireproof
- Antivandal, in-built siphon and drain

## Swinging door

- stainless steel on request
- sliding door on request

## HPL wall panels:

- extremely durable
- fireproof
- multiple colors available
- without spacing or outside fixing
- Ceramic tiles on request

## ALUMINUM FLOOR

- non-slip/non-foot print
- antibacterial
- durable
- no maintenance

self cleaning toilets

TWATER series



# SMART TECHNOLOGY<sup>®</sup> : WASHING AND DISINFECTION SYSTEM



## Washing and Drying System of wc-bowl:

When the user is not in the unit, the bowl is washed, disinfected and dried. The dispensers of water and disinfectant are positioned in a device (door), that rotates horizontally on the bowl. Washing and disinfection are carried out during the forward run; drying during the backward run.

## Wc-bowl washing occurs in three phases:

- ⇒ **A continuous water veil** inside the bowl during the use, prevent from “adhesions” and facilitating the washing.
- ⇒ **Rinse**: after every use, is sprayed at high pressure a mixture of water and disinfectant (about 8 lt.), with closed-circuit discharge into the sewer system.
- ⇒ **Washing and disinfection of sitting bowl and walls**: nozzles located on rotating device spray a pressurized jets of water and disinfectant. The rotating movement of the washing device, the inclination of jets and the high pressure, produce a “chisel effect”, that improve the washing system of the wc-bowl.

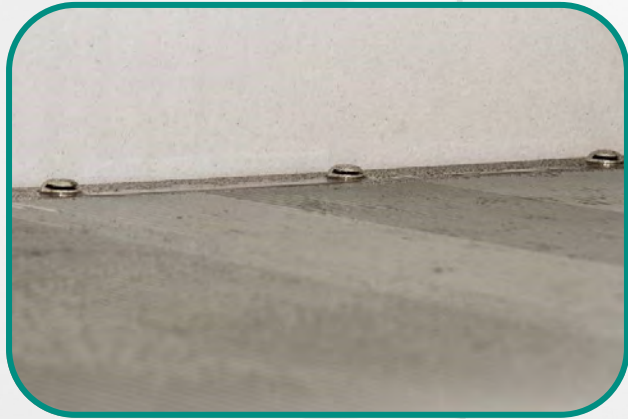
## Drying of sitting surface:

is obtained by blowing air under pressure, generated by a tangential electric fan (560 mc/h a 500 Pa), through a diffuser, that conveys and addresses the air flow in such a way, useful to eliminate any residual of water resulting from the cleaning of the sitting surface. The electric fan is "low noise".

## Walls washing:

Washing and disinfection of the walls around the wc bowl, until an high of 80 cm





### Washing and disinfection system SMART TECNOLOGY®:

Our system **washes, disinfects and dries the surface of the wc-bowl, the walls up to 80 cm**: the surface is washed with high pressure jets of water and disinfectant, sprayed from the stainless steel nozzles in the floor. To increase performance and optimize wash water consumption, the nozzles are activated alternately: the power of the water spray is used to move small waste on the floor surface with recovery in technical room, leaving the floor clean and disinfected, with a total consumption of water for each washing cycle of 20 lt.

Floor is made of extruded aluminum slats, anti-slip, anti-fingerprint and anti-bacterial: this material has the advantage of not having joints and do not need regular maintenance. Floor cleaning can be easily programmed according to customer needs.

Cleaning the floor can be easily programmed according to customer requirements and the number of daily hits the toilet.



### Automatic handbasin washing:

This system consists in right placed wipers that allow to clean the wash basin internal surfaces. This system allow to clean and cleanse the wash basin after every use.

Wipers are placed at wash basin sides and they cleanse both walls and the sloping plane. This system allows moreover to remove possible objects on the wash basin. (**security system anti-syringe - exclusive PTMatic**).

self cleaning toilets

**TWATER series**



The seating surface and the inner walls of the toilet wc-bowl are washed with water and disinfectant sprayed from nozzles located on the device retractable rotary. Drying takes place during the closing of the door, thanks to a jet of high pressure air

A continuous water veil on the internal walls during the use, prevent the bowl from "adhesions"

The handbasin is washed after each use, thanks to the presence of nozzles that spray water, cleaning the surfaces and sides

A large grid over the entire wall to the drain of the washing water, ensures an easy discharge of liquids

The floor is washed and disinfected after each use, thanks to the presence of stainless steel nozzles that spray high pressure water and disinfectant





## KIT WINTER PRO

Solution for increase toilette winter environment heating with:

- Winter environment security heating COMFORT PLUS
- Automatic depletion device of the water system
- Thermal and acoustical increase insulation
- Hot water boiler



## KIT INOX

solution with stainless steel accessories vandal-proof with:

- Stainless steel wall-hung bowl with overflow control device
- Stainless steel baby-changing table
- Stainless steel handrail for disable users



## KIT VISTA PT®

- PT-help-sound system emission with voice instructions and messages to users visually impaired
- Internal control buttons with instructions in Braille and backlit with LEDs







[www.toilitech.com](http://www.toilitech.com)

VIA GIOTTO 1  
20010 BAREGGIO (MI) - ITALY  
Tel.: (+39) 02 90 39 00 02  
Fax: (+39) 02 90 19 26 2  
[info@toilitech.com](mailto:info@toilitech.com)

self cleaning toilets

**TWATER series**