

# Toi!itech<sup>®</sup>



public toilets

**CITY series**





**CITY** toilets are **PREFABRICATED OUTDOOR PUBLIC CONVENIENCES**, conceived to be installed in urban contexts such as **markets, public parks, rest areas, parking lots** etc. **CITY** toilets are made of special concrete reinforced steel, with an extremely **ROBUST and FLEXIBLE** structure, and allow **several finishes** and **various formal solutions**. **CITY** toilets can be ordered in the standard version (accessible for people with disabilities), or with two or more cubicles that can be customized in several ways: toilets for disabled, unisex toilets, changing rooms, showers, storage rooms, urinals etc. All cubicles are equipped with appropriate siphoned drains for an easy cleaning of floor and equipment. Automated devices are available for access control, water supply, bowl flushing and lighting control.

**Features:**

- External dimensions can change according to the number, type and design of toilets.
- **Monoblock** in **reinforced vibrated concrete, vandal resistant, fireproof, anti-graffiti**
- Exterior **HPL** cladding, **without joints, vandal resistant, fireproof, anti-graffiti** (interior can be fitted with tiles)
- Non-slip, frost-proof, impact resistant 25 x 25 cm. **floor tiles**
- **Suspended flushing tank in white vitreous china** equipped with time-controlled automatic flow-meter flushing system with wall mounted push-button
- Wall-mounted vitreous china wash basins equipped with timed push-button mixer tap (lever-controlled in toilets for disabled), stainless steel anti-vandal protected syphon
- Single-leaf solid swing door in grey aluminum, complete of handle and lock cylinder with external key and internal keyless safety lock.
- **Safety access to technical room from the outside**
- **Access for users with disabilities** in accordance with European laws







#### LARGE POLYCARBONATE DOME

- Natural lighting
- Forced ventilation

#### INTERNAL WALLS CLADDED WITH TILES 25x25 cm

- Durable
- Non-freeze
- Stain resistant

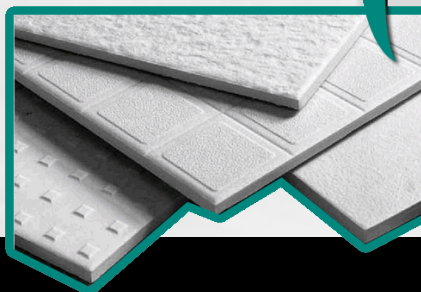
#### CONCRETE BLOCK

- Durable
- Anti-vandal and fireproof
- Flexible features and dimensions
- Customizable



#### FLOOR WITH TILES

- Non-slip
- Non-freeze
- Stain resistant



#### SECURITY SWING- ING DOOR

- Stainless steel inox on request
- Anti-vandal
- Anti-sign
- Durable

#### TECHNICAL DOOR

- External security access
- Anti-vandal
- Anti-sign
- Durable
- Maintenance is possible also with person inside the toilet

public toilets

**CITY series**

# PTMatic for environment



## LOW WATER CONSUMPTION:

Compared to a traditional toilet, the management system dispenses a predetermined quantity of water in order to avoid unnecessary waste.

## LOW ENVIRONMENTAL IMPACT:

90% of components of the toilet are completely recyclable (cement, aluminum, plastic, etc). In our factory is possible to dispose old toilets.

## LOW CONSUMPTION LIGHTING SYSTEM WITH LED:

External and internal illumination of the toilet is with LED lamps (12 V). Total electricity consumption is 20 W per cycle. Without person inside, lights remain off, without wasting energy.

## REMOTE CONTROL:

Our toilets can be equipped with a remote control system that checks the status of the toilet. This allows to reduce number of site visits, optimizing the operations of the maintainer with a fuel saving of about 10%.



TOILITECH works  
with ISO 14000

public toilets

CITY series





public toilets

CITY series



# PROJECTS

public toilets

**CITY series**

# Nerviano (Italy)

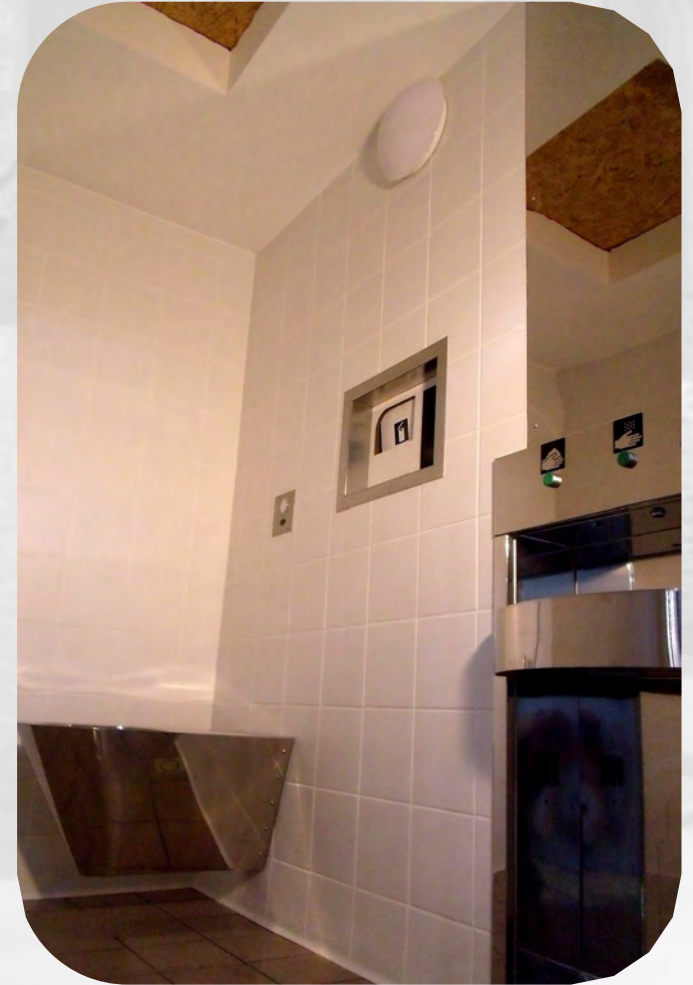


public toilets

**CITY series**



# Acquapendente (Italy)



public toilets

**CITY series**

# Firminy (France)



public toilets

**CITY series**



# Lozanne (France)



public toilets

**CITY series**



# INTERNI



## Automatic lighting

## Toilet paper dispenser

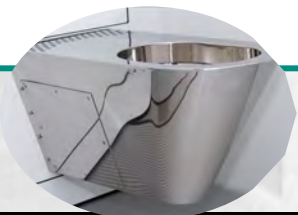
- fireproof
- antivanda
- automatic with control of uses (on request)

## Disable handrail

- stainless steel inox on request

## Ceramic wall-hung bowl:

- stainless steel available
- non-spill system



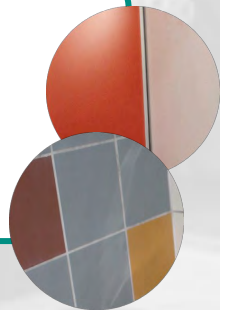
## Security stainless steel mirror

## Ceramic washbasin

- Stainless steel available
- Automatic on request

## Internal tiles wall

- Durable
- Non-freeze
- Stain resistant
- HPL on request



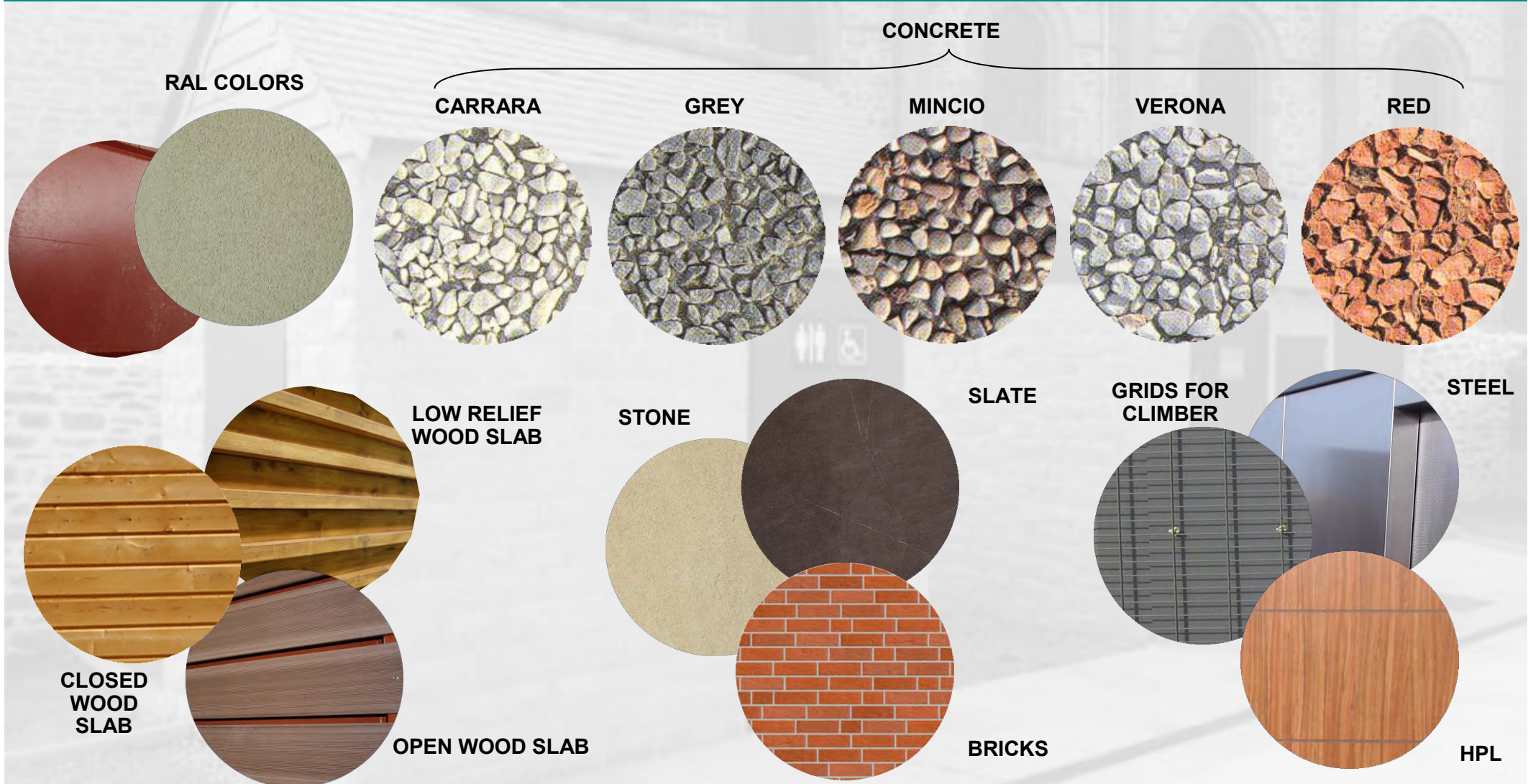
## Floor with tiles 25cm x 25cm

- Non-slip
- Non-freeze
- Stain resistant

public toilets

**CITY series**

# External finishing



public toilets

**CITY series**



# External optional



**PAINTEND SWINGING DOOR**



**STAINLESS STEEL  
SWINGING DOOR**

**AMSTERDAM  
CORNICE**



**MILAN  
CORNICE**



**VENEZIA  
CORNICE**

public toilets

**CITY series**





[www.toilitech.com](http://www.toilitech.com)

VIA GIOTTO 1  
20010 BAREGGIO (MI) - ITALY  
Tel.: (+39) 02 90 39 00 02  
Fax: (+39) 02 90 19 26 2  
[info@toilitech.com](mailto:info@toilitech.com)

public toilets

**CITY series**